



Accommodation Factsheet

Kamalaya rests on a lush tropical hillside, sloping down to a tranquil private beach. The 76 rooms and villas are situated amidst ancient, granite boulders, streams and tropical vegetation, with existing rocks and trees as defining elements for many of the structures. Asian textiles and carefully selected art pieces combine with modern amenities to create comfortable, serene and elegant interiors. Nature's restorative presence is felt through semi-open bathrooms, outdoor terraces and balconies, expansive windows and captivating views.

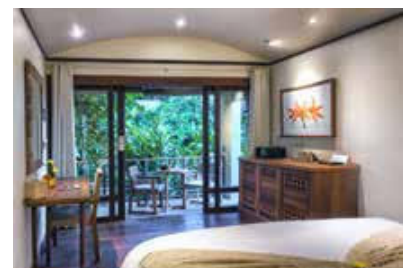
Hillside

- No. of units 8
- Size: 35m²
- Description: Nestled amidst magnificent boulders and trees, these cosy retreats are simply designed and accented with natural furnishings.
- Location: Conveniently located next to the Yoga Pavilion, Shakti Fitness Centre and Yantra Hall and near to Soma restaurant.
- Beds: Twin and king size bed options
- Bathroom: Indoor bathrooms
- Balcony: These rooms have no outside space



Hillside Garden View

- No. of units 10
- Size: 35m²
- Description: Nestled amidst magnificent boulders and trees, these cosy retreats are simply designed and accented with natural furnishings.
- Location: Conveniently located next to the Yoga Pavilion, Shakti Fitness Centre and Yantra Hall and near to Soma restaurant.
- Beds: Twin and king size bed options
- Bathroom: Indoor bathrooms
- Balcony: All have balconies overlooking quiet and tranquil gardens



Hillside Sea View

- No. of units 6
 Size: 35m²
 Description: Nestled amidst magnificent boulders and trees, these cosy retreats are simply designed and accented with natural furnishings.
 Location: Conveniently located next to the Yoga Pavilion, Shakti Fitness Centre and Yantra Hall and near to Soma restaurant.
 Beds: Twin and king size bed options
 Bathroom: Indoor bathrooms
 Balcony: All have balconies with sea views



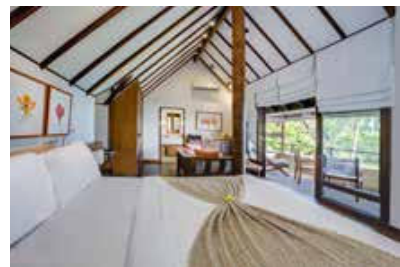
Rock Top Suite

- No. of units 1
 Size: 56m²
 Description: Tucked away at the top of the resort, this suite offers a secluded patio area, a spacious, high-ceilinged bedroom and cosy living area.
 Location: In the jungle at the top of the resort.
 Beds: Twin and king size bed options
 Bathroom: Indoor bathroom with bathtub
 Balcony: Outdoor living space with daybeds



Suites Sea View

- No. of units 10
 Size: 65m²
 Description: The location of the suites at the top of the resort allows for stunning sea views from all balconies, some of which contain outdoor bathtubs. The views, combined with the comfortable and spacious living accommodation, make the suites one of our most popular room categories.
 Location: Situated at the top of the resort, close to Soma Restaurant and Alchemy Tea Lounge.
 Beds: Twin and king size bed options. There is also space for an extra bed to be set up.
 Bathroom: Indoor or outdoor bathroom (all with bathtubs)
 Balcony: All have balconies with exceptional panoramic coastal and valley views



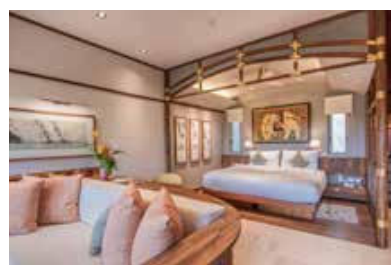
Villas Sea View

- No. of units 20
 Size: 75 - 100m²
 Description: Secluded villas, nestled amongst the greenery of Kamalaya, with lovely sea, jungle, beach and valley views. Each extremely spacious villa offers a unique design and setting.
 Location: Dotted in varied locations around the resort, some are closer to Soma Restaurant and the Wellness Sanctuary whilst other are nearer the beach.
 Beds: Twin and king size bed options. There is also space for an extra bed to be set up.
 Bathroom: Choice of indoor or outdoor bathrooms
 Balcony: All villas feature a large balcony (16.5 m²) with daybed



Superior Suites Sea View

- No. of units 13
 Size: 65m²
 Description: Designed to incorporate the exceptional sea and coastal views, the new Superior Suites Sea View offer a tranquil and stylish space with comfortable furnishings.
 Location: Situated at the top of the resort on three levels, close to the Yantra Hall, the Superior Suites are a short walk to our Fitness Centre, Lap Pool, Yoga Pavilion and Wellness Sanctuary.
 Beds: Twin and king size bed options
 Bathroom: A semi open-air bathroom with shower and/or bathtub
 Balcony: All have balconies overlook the Gulf of Thailand; please note that ground floor Superior Suites have Garden/partial Sea Views; mid and upper floor Superior Suites have exceptional panoramic sea views.



Garden Pool Suite

- No. of units 1
 Size: 112m²
 Description: This unique Garden Suite is situated on the ground floor of our new Superior Suites building. With a large, spacious interior, the Garden Pool Suite also boasts its own private pool within a serene garden featuring a pond and water features, while also overlooking stunning views of the Gulf of Thailand and its outlying islands.
 Location: Situated at the top of the resort, close to the Yantra Hall, the Garden Pool Suite is located on the ground floor of our Superior Suite building, a short walk to our Fitness Centre, Lap Pool, Yoga Pavilion and Wellness Sanctuary.
 Beds: Twin and king size bed options
 Bathroom: Private Indoor bathroom with shower
 Balcony: Large private balcony with private pool



Pool Villa - 1 bedroom

- No. of units 1
 Size: 126m²
 Description: The sound of flowing water fills this unique and secluded villa. The intriguing layout reveals a spacious sea-facing living area with an adjoining courtyard containing a private outdoor bathing pool.
 Location: Next to Amrita Café and close to the beach.
 Beds: One bedroom with a king size bed. There is space for an extra bed to be set up.
 Bathroom: Outdoor bathroom
 Balcony: Large sea view sundeck with daybeds



Beachfront Villa - 1 bedroom

- No. of units 1
 Size: 110m²
 Description: Nestled atop granite boulders directly overlooking Kamalaya's secluded beach, this extremely private villa has a spacious living area and terrace with daybed. Relax on the covered terrace by day and at night fall asleep to the sound of gentle waves.
 Location: Beachfront , with a private path to the beach
 Beds: 1 bedroom with a king size bed. There is space for an extra bed to be set up.
 Bathroom: Indoor bathroom with bathtub
 Balcony: Large terrace with daybeds



Penthouse Pool Suites Sea View

- No. of units 2 (Two One-Bedroom Penthouse Pool Suites - can convert to two x Two-Bedroom Penthouse Pool Suites)
 Size: 142m²
 Description: Perched high above the surrounding nature the Penthouse Pool Suites are located at the highest point of the resort and offer breathtaking views of Koh Samui's coastline. With ample space and a large outdoor living area including a rim-flow infinity pool, the Penthouse Pool Suites provide exceptional privacy in a stunningly beautiful and serenely peaceful setting.
 Location: Situated at the top of the resort, close to the Yantra Hall, the Penthouse Pool Suites are located on the top floor of our Superior Suite building, a short walk to our Fitness Centre, Lap Pool, Yoga Pavilion and Wellness Sanctuary.
 Beds: Twin and king size bed options.
 Bathroom: A semi open-air bathroom with shower and bathtub
 Balcony: Large private balcony with daybed and private pool



Rock Top Pool Villa

No. of units 1 (Rock Top Pool Villa can be combined with Rock Top Pool Suite to become a two-bedroom option)
 Size: 250m²
 Description: A very spacious two floor villa with airy lounge space, a private pool overlooking the resort and a large, sea-facing outdoor yoga sala.
 Location: In the jungle at the top of the resort
 Beds: King size bed. There is space for extra bed to be setup
 Bathroom: Private indoor bathroom with bathtub and outdoor shower
 Balcony: Large outdoor living space with daybeds and private pool



Beachfront Pool Villa – 1 bedroom

No. of units 1
 Size: 172m²
 Description: Perfect for those looking for extra privacy, this spacious villa sits atop granite boulders directly above Kamalaya's beach. Step down from the living area to enjoy the expansive beachfront decking and private pool, or walk down the stone pathway onto the beach.
 Location: Beachfront, with a private path to the beach
 Beds: 1 bedroom with a king size bed. There is space for an extra bed to be set up.
 Bathroom: Indoor bathroom with bathtub
 Balcony: Large sun deck with daybeds and private beach-view pool



Beachfront Pool Villa – 2 bedroom

No. of units 1
 Size: 215m²
 Description: This secluded and extremely spacious private villa is nestled amid the trees, overlooking the Kamalaya beach. With two private bedrooms, both with en-suites, and a private pool that overlooks the ocean, it is an ideal choice for those travelling with family or friends.
 Location: Beachfront, with a private path to the beach.
 Beds: Two individual 1-bedroom villas with king size beds joined by private courtyard (main villa is beachfront). There is space for an extra bed to be set up.
 Bathroom: Two en-suite bathrooms with bathtubs, one inside and one out
 Balcony: Large sun deck with daybeds and private beach-view pool



Inclusions for all accommodation types

- Air-conditioning
- Hair dryer
- CD & stereo system
- Yoga mat
- Refrigerator
- Telephone
- iPod dock
- Beverages, fruit and snacks
- WiFi (available at an additional cost)
- Personal safe

The rooms do not come with televisions and DVD players, however these can be requested.

For more information about our accommodation, please have a look at our website:

www.kamalaya.com/spa-koh-samui-accommodation.htm